
IMPACT ON PROSPERITY IN WASHINGTON STATE

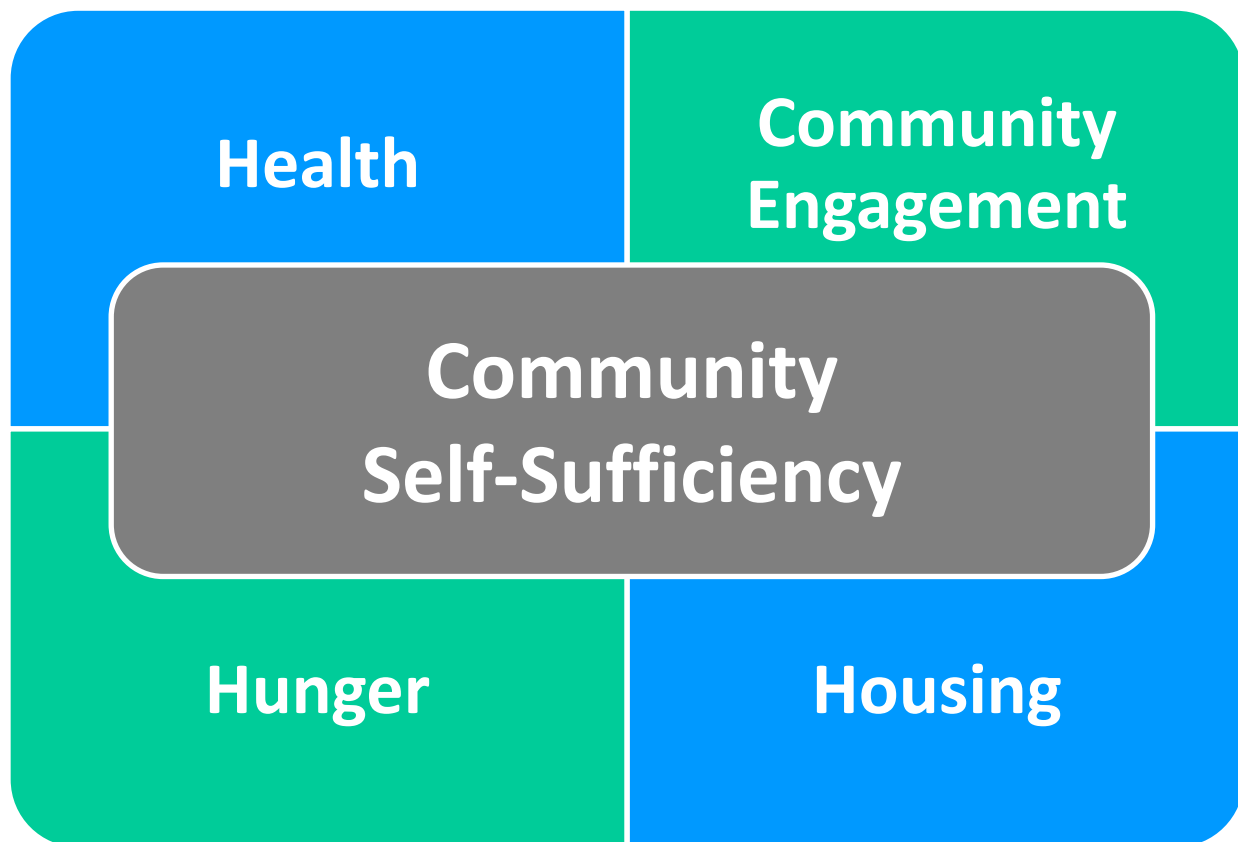
2016 DASHBOARD



The mission of the Community Action Council is to strengthen individuals and families to lessen the impacts of poverty.

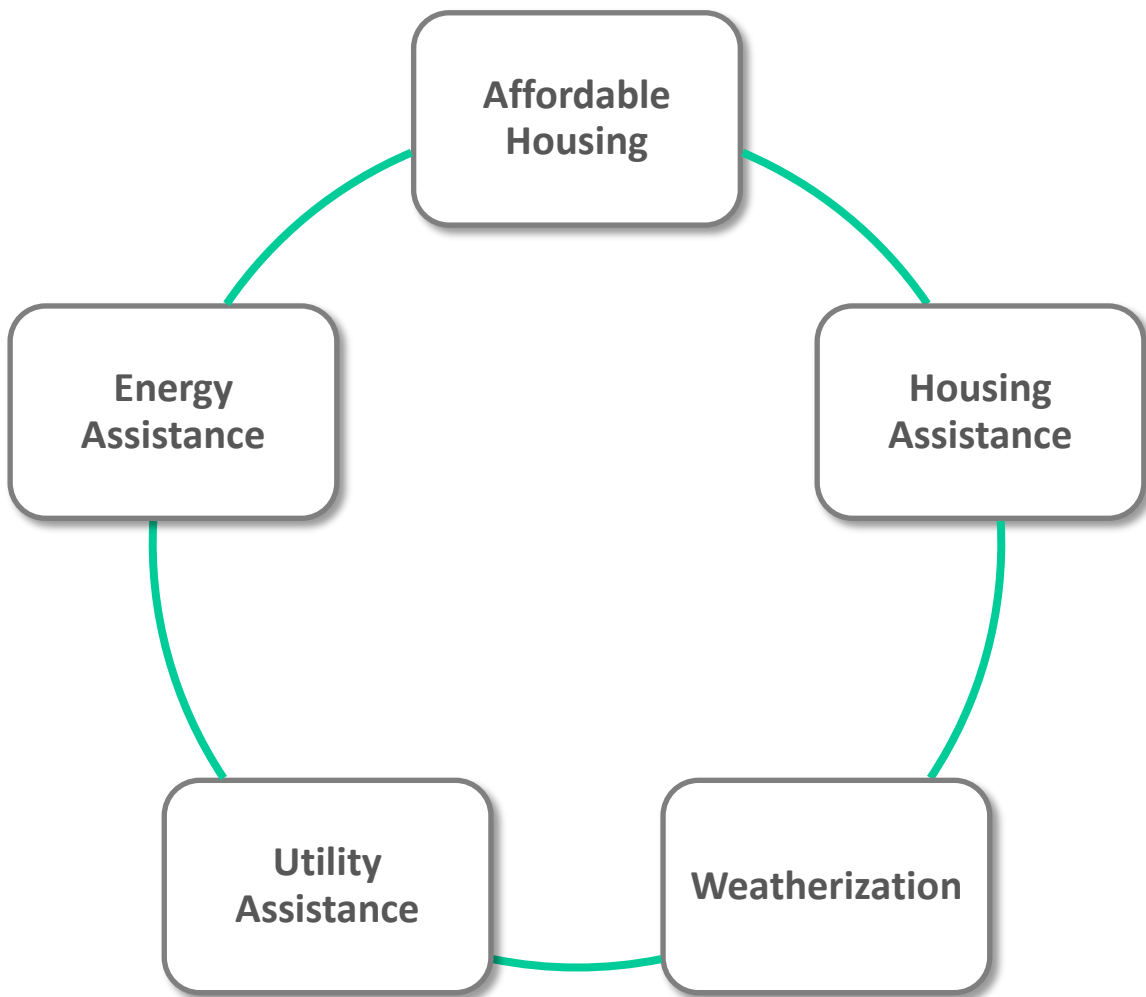
ABSTRACT

Last year, the Community Action Council of Lewis, Mason and Thurston Counties touched the lives of more than **13,000 families** living in our communities, helping more than **20,000 of our community member's** move toward lasting self-sufficiency.



HOUSING

"We believe everyone should have a safe, affordable place to live and call home."



SAFE - AFFORDABLE - WARM - EFFICIENT

Energy Assistance

Through the federally funded LIHEAP program we provided energy assistance to over **4,700 households**. We distributed over **\$2 million** to help residents cover their gas, electricity, oil, wood or propane bills. Our **Energy Assistance program** believes in providing equitable, confidential and reliable energy assistance services to low-income families and individuals.

Private Fuel Funds

Puget Sound Energy HELP provides assistance with the cost of natural gas and electricity consumption to qualified PSE customers with an account in their name or in the name of a member of their household. In addition to PSE, we partnered up with county PUD's and Cascade Natural Gas to distribute more than **\$2 million in Private Fuel Funds** to over **5,400 households**, ensuring warmth and light during the winter months.

Homeless Prevention

The purpose of the **Housing and Essential Needs (HEN) program** is to prevent the homelessness of and to rehouse unemployable adults and assist them with basic essential needs such as utility payments, personal hygiene products and transportation. Last year, **a monthly average of 230 households who were either homeless or at risk of homeless** received assistance.

Weatherization Program

The goal of our **Weatherization program** is to improve the quality of life of our clients by reducing their energy and budget burdens, allowing them to become more self-sufficient. Last year we improved the health and safety of more than **102 homes** and provided basic services to an additional 9 homes.

Affordable Housing

In order to improve the quality of life in our community, we will continue to play a key role as a provider of **Affordable Housing** in our service area. Working with multiple jurisdictions we strive to increase the number of affordable housing opportunities in our community. In the past years we have housed over **692 people in 375 units**.

Utility Assistance

Utility Assistance Funds are donated to the utilities by customers to help people pay their utility bill and avoid disconnection. Community Action Council distributed \$9494 in funds to help **130 homes** with utility payments. To qualify for assistance, a household or an individual must meet the specific income guidelines of each separate program.

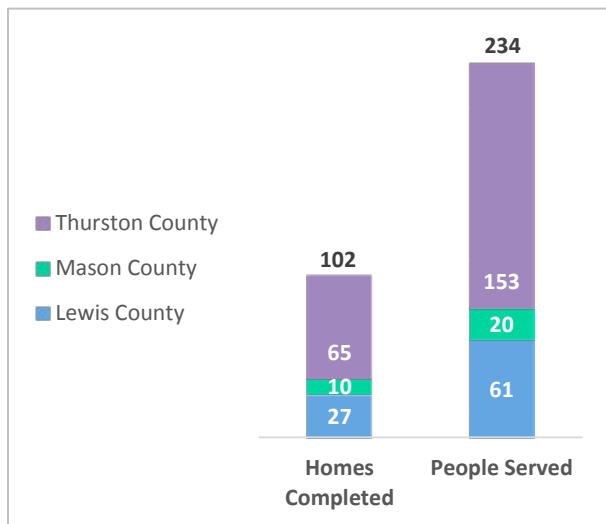
AFFORDABLE HOUSING

County	Property	Units	Occupancy Rate	People Housed	Type of Housing
Lewis	Tilton River	14	96%	13	Senior/Handicapped
	Virginia Station	36	95%	88	Family
Thurston	Deschutes Cove	44	97%	111	Family
	Tolmie Cove	44	96%	119	Family
	Killion Court	20	96%	19	Senior/Handicapped
	Diamond Street	2	100%	5	Family
	Prairie Run	32	95%	78	Family
	Salmon Run	40	95%	111	Family
Grays Harbor	Montesano Harbor	30	100%	30	Senior
	Montesano Annex	24	100%	24	Senior
Mason	Saratoga	41	96%	43	Senior/Handicapped
	Ashford	24	94%	24	Senior/Handicapped
	Belfair	24	94%	27	Senior/Handicapped
TOTAL		375	96.6%	692	

(Note: Occupancy Rate and People Housed are an annual average)

Funding Partners Include: Washington State House Financing Commission, Housing Trust Fund, USDA, HUD, Mason County, Thurston County, City of Tumwater

WEATHERIZATION



Funding Partners Include: Department of Commerce – Match Makers, Health & Human Services, Department of Energy, Bonneville Power Administration, Puget Sound Energy, TransAlta

OTHER UTILITIES

County/City	Households	Expenditure	People
Lacey	111	\$8,082.00	317
Mason	19	\$1,412.00	51
TOTAL	130	\$9,494.00	368

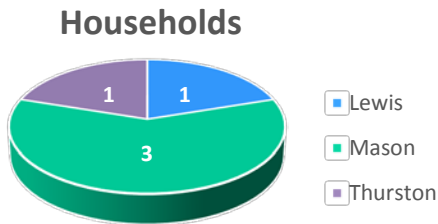
Funding Partners: City of Shelton – private donations, City of Lacey – private donations

ENERGY ASSISTANCE

County	Households	Expenditure	Benefit/Family	People
Lewis	1,164	\$481,393.00	\$414	2,861
Mason	899	\$414,287.00	\$461	2,141
Thurston	2,732	\$1,172,676.00	\$429	7,145
TOTAL	4,795	\$2,068,356.00	\$431	12,147

(Note: Benefit/Family is the annual average; people served based in average household served)
OES Services (Minor heating repairs)

OES SERVICES (MINOR HEATING REPAIRS)



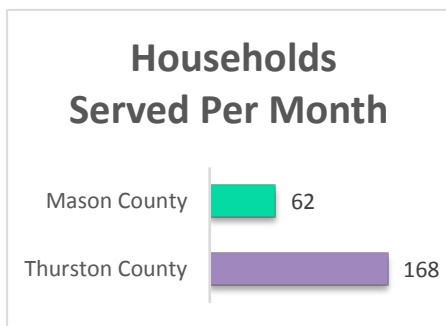
Funding Partners Include: Health & Human Services

PRIVATE FUEL FUNDS

County	Households	Expenditure	Average Benefit/Family	People
Lewis	259	\$43,307.00	167	684
Mason	379	\$72,896.00	192	992
Thurston	4,822	\$2,169,580.00	449	10,593
TOTAL	5,460	\$2,285,783.00	419	12,269

Funding Partners Include: Puget Sound Energy, Lewis County PUD #1, Cascade Natural Gas, Mason County PUD #3, Mason County PUD #1, Washington Consumer Energy Fund, Private donations

HOMELESS PREVENTION RENTAL ASSISTANCE



OTHER ESSENTIAL NEEDS

Essential Need	Total
Household Supplies	865
Bus Passes	1,217

HEALTH

“We believe securing a family’s health and well-being is a long-term investment in individual lives and our community.”

Women, Infants and Children (WIC)

Monarch Children's Justice and Advocacy Center

NUTRITIOUS - EDUCATIONAL - PREVENTATIVE - EMERGENCY

Women, Infants and Children (WIC)

Our **WIC program** provides nutritious foods and nutrition education to help low-income households select healthy foods for pregnant, breastfeeding, and post-partum women, babies and small children. Children start school with an improved ability to learn. Our clients learn how to provide healthy foods for their families and as a result, kids start school with an improved energy to learn and play! **Over 2,800 WIC families** became more self-sufficient and empowered by our various programs at this crucial time in their lives.

Monarch Children’s Justice and Advocacy Center

In conjunction with our partner agencies, **Monarch** provided a wide range of services at no cost to **1,591 child victims** and their families. We work to reduce the incidence and impact of child abuse by providing a coordinated, multidisciplinary response to victims of child abuse and their families. This response includes prevention, investigation, prosecution, and treatment and includes community partners who are experts in those areas. The data reveals that 38% of the victims were 12 years old or younger; 83% were women and 70% have been sexually abused. The Family Advocate assisted over 800 people with services. Monarch added the Lewis and Mason County Crime Victim Advocacy Services and provided assistance to over 2,133 crime victims.

WOMEN, INFANTS AND CHILDREN (WIC)

Population	Total Enrolled/month average	Total Participating/month average
Women	720	586
Infants	702	526
Children	1,454	1,199
TOTAL	2,876	2,311

Thurston County	Enrolled	Participating
Women	399	318
Infants	397	290
Children	768	628
Thurston County Families Served	1564	1,236
Mason County	Enrolled	Participating
Women	321	268
Infant	305	236
Children	686	571
Mason County Families Served	1,312	1,075
TOTAL	2,876	2,311

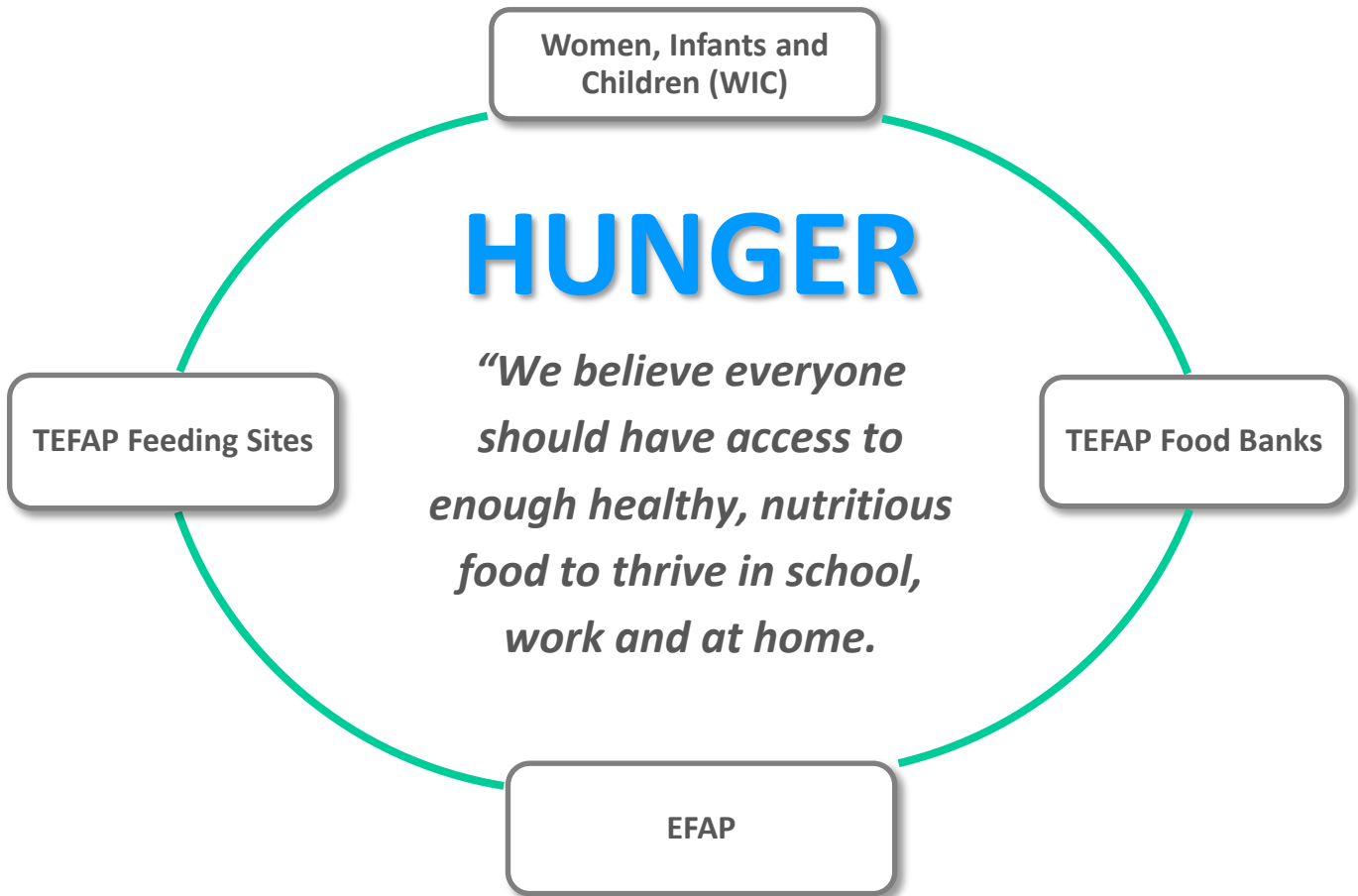
Funding Partners Include: Washington Department of Health, US Department of Health and Human Services

MONARCH CHILDREN’S JUSTICE & ADVOCACY CENTER

Funding Partners Include: Department of Health and Human Services, United Way of Thurston County, Nisqually Tribe, Department of Commerce (Office of Crime Victims Advocacy), National Children’s Alliance, Private donations, Providence St. Peters, Thurston County Prosecutors Office, Zonta of Olympia, Chehalis Tribe, Office of Crime Victims

Client Demographics	# Clients
Male	277
Female	1,314
Age 0-6	206
Age 7-12	403
Age 13-18	359
Age 19+	623
Sexually Abused	1,134
Physically Abused	108

Crime Victim Center – Served 2,133 Clients



Nutritious - Healthy - Thrive - Grow
TEFAP Food Banks (The Emergency Food Assistance Program)
<p>The need for food assistance is steadily increasing. Monthly we serve over 20,000 individuals in Lewis, Mason, Thurston and Kitsap counties at <u>TEFAP Food Banks</u>.</p>
TEFAP Feeding Site (The Emergency Food Assistance Program)
<p>More and more people are seeking food banks and other resources in order to survive, and Community Action Council is here to help. <u>TEFAP Feeding Sites</u> served more than 230,000 meals to hungry individuals and families.</p>
Women, Infants and Children (WIC)
<p>Kids need healthy food to fuel their bodies and brains! Our <u>WIC program</u> distributed over \$1,499,475.00 to households with young children in Thurston and Mason Counties. This has enabled them to stock healthy and nutritious food options in their kitchens.</p>
Emergency Food Assistance Program (EFAP)
<p>Through our Emergency Food Assistance Program over 10,831 people received 1,342,989 pounds of food at our Mason County Food Banks.</p>

TEFAP FOOD BANKS (ANNUAL DATA)

Category	Lewis	Mason	Thurston	Kitsap	Total
Households	13,537	5,879	24,324	39,805	83,545
Individuals	37,974	16,490	75,274	116,007	245,745
Value	\$262,446	\$107,555	\$425,629	\$286,609	\$1,082,239
Pounds	165,055	155,705	606,756	41,6641	1,344,157

Funding Partners Include: Department of Health and Human Services, General Administration

TEFAP FEEDING SITES (ANNUAL DATA)

Category	Lewis	Mason	Thurston	Kitsap	Total
Meals	1,362	0	152,207	76,936	230,505
Individuals	312	0	4,806	3,731	8,849
Value	\$1,936	0	\$37,447	\$92,528	\$131,911
Pounds	2,886	0	62,988	129,483	195,357

Funding Partners Include: Department of Health and Human Services, General Administration

EFAP

Unduplicated Clients	11,476
Unduplicated Households	4,132
Duplicated Clients	101,220
Duplicated Households	33,786
Pounds Distributed	1,342,989

Funding Partners Include: Department of Commerce

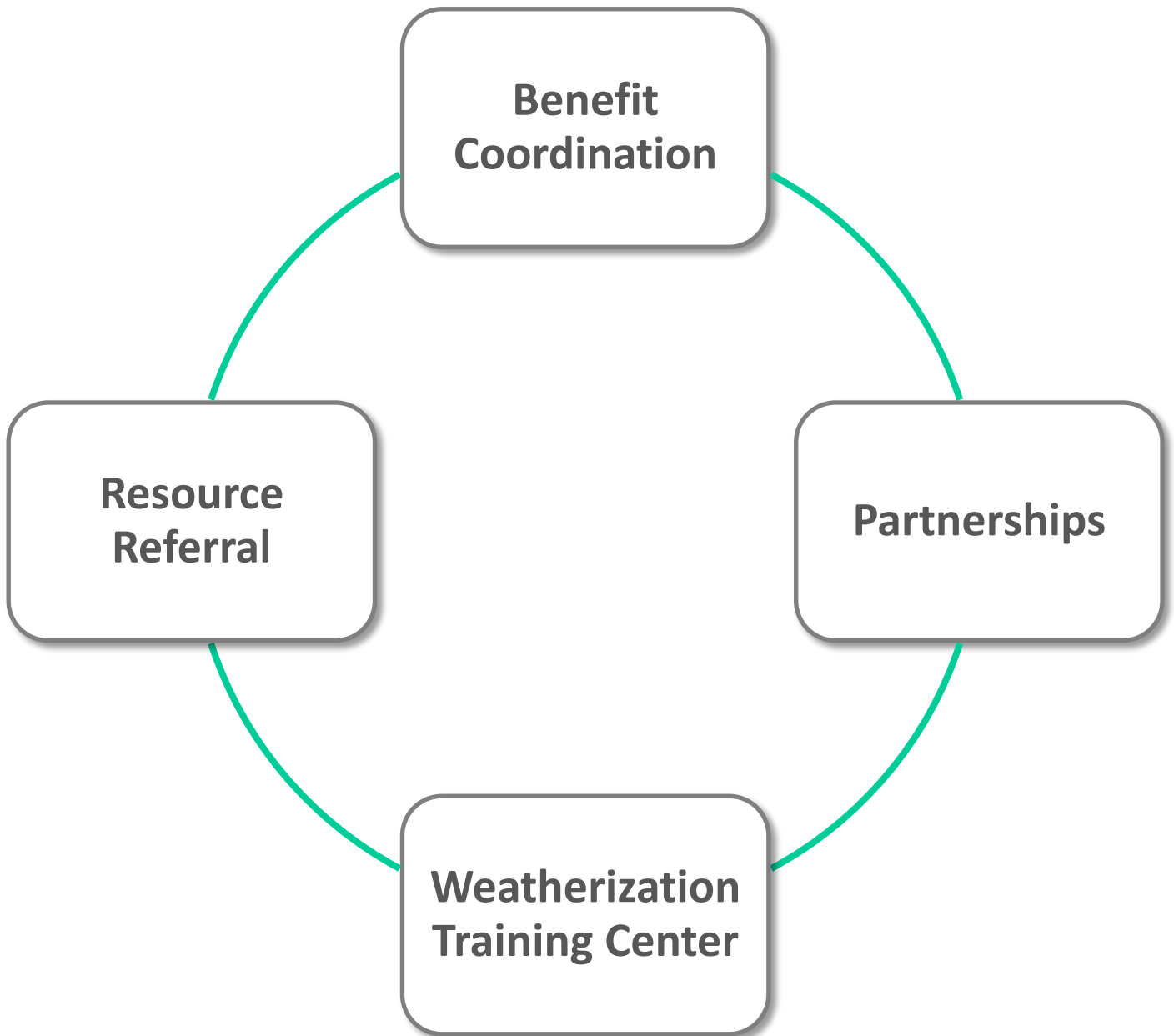
WOMEN, INFANTS & CHILDREN

Vouchers Distributed (Approximate Value)	
Thurston County	\$797,205
Mason County	\$702,270
Total	\$1,499,475

Funding Partners Include: Washington State Department of Health, Department of Health and Human Services

COMMUNITY ENGAGEMENT

“We believe in actively working with our community to provide resource referrals, training opportunities and partnerships.”



Coordination - Collaboration - Training - Resources

Resource Referrals

Over 26,000 people received appropriate resource referral to Community Action Council services as well as other service providers in the community.

Partnerships

We actively partner with 70 public and private organizations to expand resources and opportunities in order to achieve positive family and community outcomes. Partnerships include nonprofits, faith based organizations, local governments, and private organizations.

Weatherization Training Center

The Weatherization Training Center provides training in lead safe practices, OSHA, thermal imaging and more. The facility allows for video conferencing, making it truly multifunctional to the agency and community as a whole.

Resource Referral

Over **26,999** people received appropriate resource referral to Council services as well as other service providers in the community.

Partnerships

Community Action Council actively partners with both public and private organizations to expand resources and opportunities in order to achieve family and community outcomes. Organizations include nonprofits, faith based organizations, local governments, and private corporations.

Total number of partnerships – 70

Weatherization Training Center

Other Community Action Agency Staff	5
State Staff	5
Private Contractors	3
State Video Conference/Meetings	5

(Training includes lead safe practices, OSHA, thermal imaging and more)