
IMPACT ON PROSPERITY IN WASHINGTON STATE

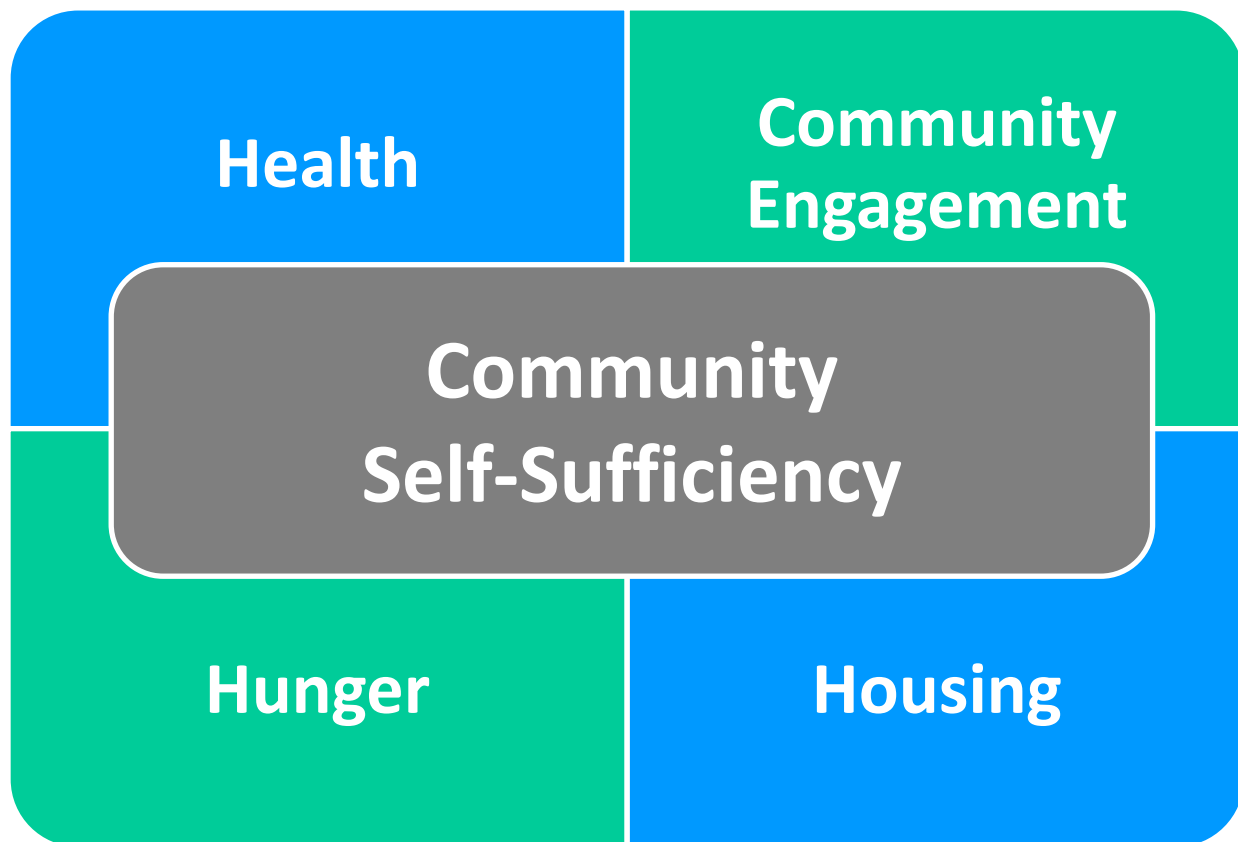
2017 DASHBOARD



The mission of the Community Action Council is to strengthen individuals and families to lessen the impacts of poverty.

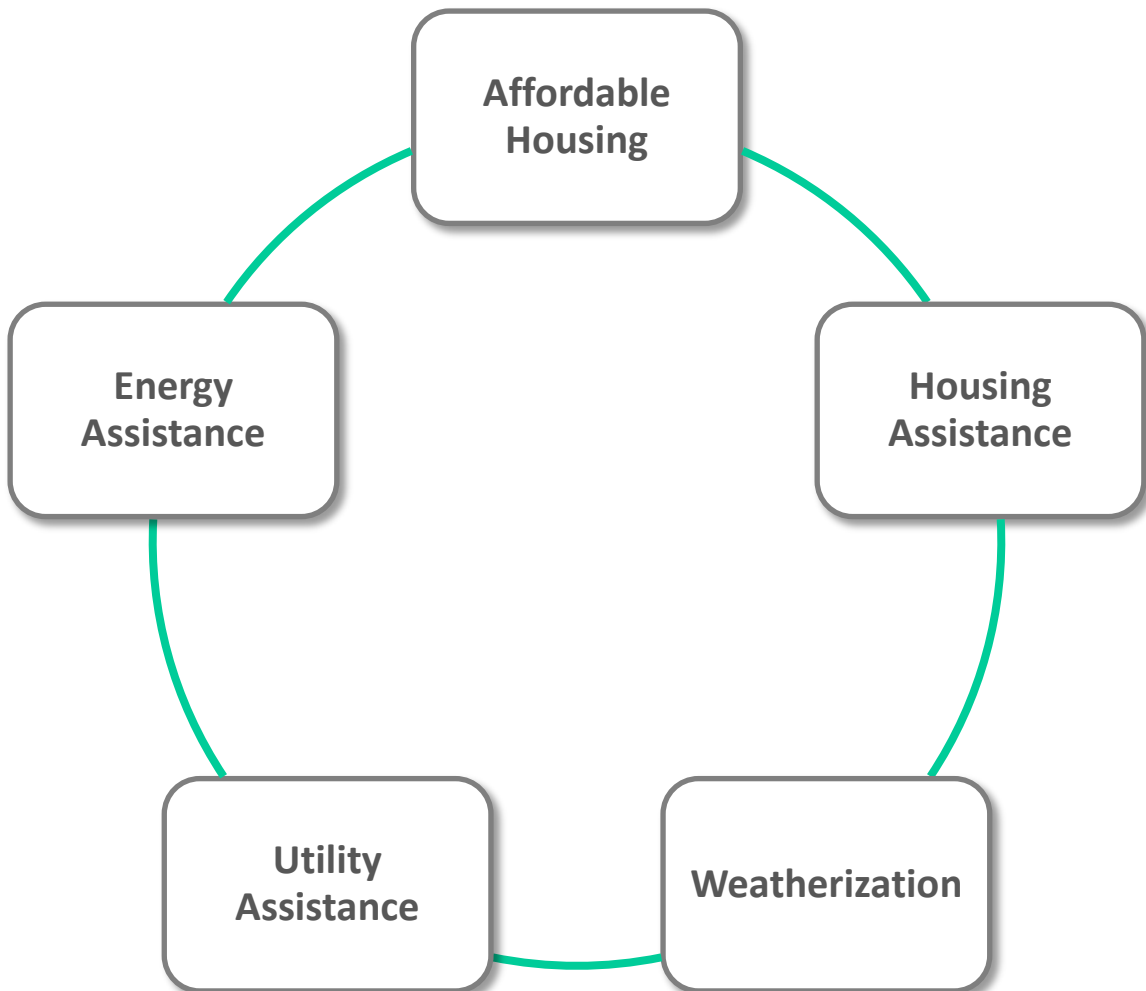
ABSTRACT

Last year, the Community Action Council of Lewis, Mason and Thurston Counties touched the lives of more than **9,000 families** living in our communities, helping more than **22,000 of our community member's** move toward lasting self-sufficiency.



HOUSING

"We believe everyone should have a safe, affordable place to live and call home."



SAFE - AFFORDABLE - WARM - EFFICIENT

Energy Assistance

Through the federally funded LIHEAP program we provided energy assistance to over **4,100 households**. We distributed over **\$1.8 million** to help residents cover their gas, electricity, oil, wood or propane bills. Our **Energy Assistance program** believes in providing equitable, confidential and reliable energy assistance services to low-income families and individuals.

Private Fuel Funds

Puget Sound Energy HELP provides assistance with the cost of natural gas and electricity consumption to qualified PSE customers with an account in their name or in the name of a member of their household. In addition to PSE, we partnered up with county PUD's and Cascade Natural Gas to distribute more than **\$2.6 million** in **Private Fuel Funds** to over **5,700** households, ensuring warmth and light during the winter months.

Homeless Prevention

The purpose of the **Housing and Essential Needs (HEN) program** is to prevent the homelessness of and to rehouse unemployable adults and assist them with basic essential needs such as utility payments, personal hygiene products and transportation. Last year, **a monthly average of 270 households who were either homeless or at risk of homeless** received assistance.

Weatherization Program

The goal of our **Weatherization program** is to improve the quality of life of our clients by reducing their energy and budget burdens, allowing them to become more self-sufficient. Last year we improved the health and safety of more than **134 homes**.

Affordable Housing

In order to improve the quality of life in our community, we will continue to play a key role as a provider of **Affordable Housing** in our service area. Working with multiple jurisdictions we strive to increase the number of affordable housing opportunities in our community. In the past years we have housed over **687 people** in **374 units**.

Utility Assistance

Utility Assistance Funds are donated to the utilities by customers to help people pay their utility bill and avoid disconnection. Community Action Council distributed \$8,037 in funds to help **110 homes** with utility payments. To qualify for assistance, a household or an individual must meet the specific income guidelines of each separate program.

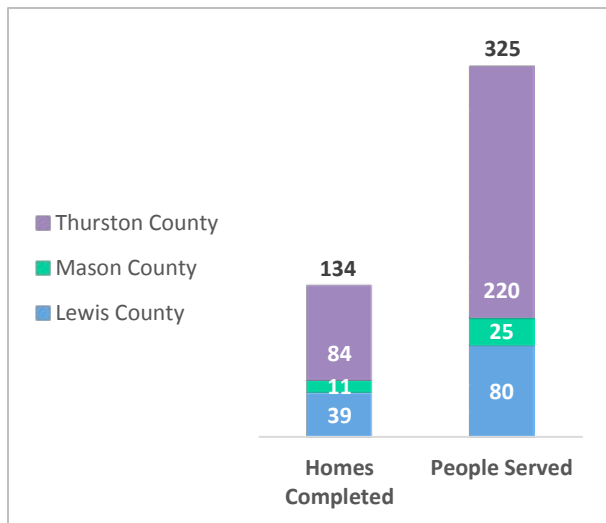
AFFORDABLE HOUSING

County	Property	Units	Occupancy Rate	People Housed	Type of Housing
Lewis	Tilton River	14	95%	13	Senior/Handicapped
	Virginia Station	36	95%	84	Family
Thurston	Deschutes Cove	44	96%	105	Family
	Tolmie Cove	44	97%	123	Family
	Killion Court	20	98%	19	Senior/Handicapped
	Diamond Street	2	100%	5	Family
	Prairie Run	32	96%	76	Family
	Salmon Run	40	96%	112	Family
Grays Harbor	Montesano Harbor	30	99%	30	Senior
	Montesano Annex	24	100%	24	Senior
Mason	Saratoga	40	97%	43	Senior/Handicapped
	Ashford	24	98%	25	Senior/Handicapped
	Belfair	24	98%	28	Senior/Handicapped
TOTAL		374	97.3%	687	

(Note: Occupancy Rate and People Housed are an annual average)

Funding Partners Include: Washington State House Financing Commission, Housing Trust Fund, USDA, HUD, Mason County, Thurston County, City of Tumwater

WEATHERIZATION



Funding Partners Include: Department of Commerce – Match Makers, Health & Human Services, Department of Energy, Bonneville Power Administration, Puget Sound Energy, TransAlta

OTHER UTILITIES

County/City	Households	Expenditure	People
Lacey	94	\$6,837.00	297
Mason	16	\$1,200.00	45
TOTAL	110	\$8,037.00	368

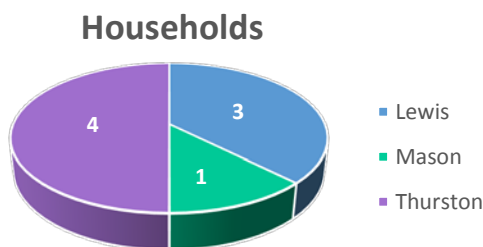
Funding Partners: City of Shelton – private donations, City of Lacey – private donations

ENERGY ASSISTANCE

County	Households	Expenditure	Benefit/Family	People
Lewis	1,006	\$417,057.00	\$432.50	2,253
Mason	836	\$364,468.00	\$438.00	1,607
Thurston	2,266	\$1,044,849.00	\$483.00	5,071
TOTAL	4,108	\$1,826,374.00	\$451.17	8,931

*(Note: Benefit/Family is the annual average; people served based in average household served)
OES Services (Minor heating repairs)*

OES SERVICES (MINOR HEATING REPAIRS)



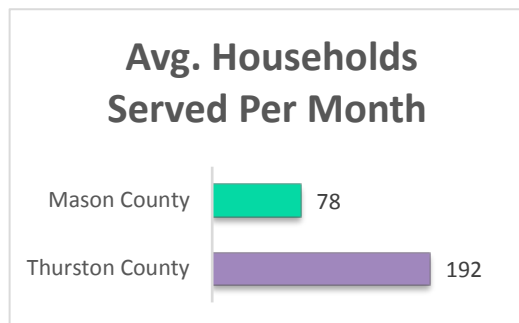
Funding Partners Include:
Health & Human Services

PRIVATE FUEL FUNDS

County	Households	Expenditure	Average Benefit/Family	People
Lewis	301	\$47,987.00	159.43	1,074
Mason	336	\$65,467.00	194.84	765
Thurston	5,076	\$2,502,424.00	492.99	10,815
TOTAL	5,713	\$2,615,878.00	457.88	12,654

Funding Partners Include: Puget Sound Energy, Lewis County PUD #1, Cascade Natural Gas, Mason County PUD #3, Mason County PUD #1, Washington Consumer Energy Fund, Private donations

HOMELESS PREVENTION RENTAL ASSISTANCE



OTHER ESSENTIAL NEEDS

Essential Need	Total
Household Supplies	901
Bus Passes	1046

HEALTH

“We believe securing a family’s health and well-being is a long-term investment in individual lives and our community.”

Women, Infants and Children (WIC)

Monarch Children's Justice and Advocacy Center

NUTRITIOUS - EDUCATIONAL - PREVENTATIVE - EMERGENCY

Women, Infants and Children (WIC)

Our **WIC program** provides nutritious foods and nutrition education to help low-income households select healthy foods for pregnant, breastfeeding, and post-partum women, babies and small children. Children start school with an improved ability to learn. Our clients learn how to provide healthy foods for their families and as a result, kids start school with an improved energy to learn and play! **Over 2,000 WIC families** became more self-sufficient and empowered by our various programs at this crucial time in their lives.

Monarch Children’s Justice and Advocacy Center

In conjunction with our partner agencies, **Monarch** provided a wide range of services at no cost to **2,054 child victims** and their families. We work to reduce the incidence and impact of child abuse by providing a coordinated, multidisciplinary response to victims of child abuse and their families. This response includes prevention, investigation, prosecution, and treatment and includes community partners who are experts in those areas. The data reveals that 41% of the victims were 12 years old or younger; 82% were women and 55% have been sexually abused. The Family Advocate assisted over 800 people with services. Monarch added the Lewis and Mason County Crime Victim Advocacy Services and provided assistance to over 1,265 crime victims.

WOMEN, INFANTS AND CHILDREN (WIC)

Population	Total Enrolled/month average	Total Participating/month average
Women	712	569
Infants	702	508
Children	1506	1181
TOTAL	2920	2258

Thurston County	Enrolled	Participating
Women	390	306
Infants	393	274
Children	811	610
Thurston County Families Served	1594	1190
Mason County	Enrolled	Participating
Women	322	263
Infants	309	234
Children	695	571
Mason County Families Served	1326	1068
TOTAL	2920	2258

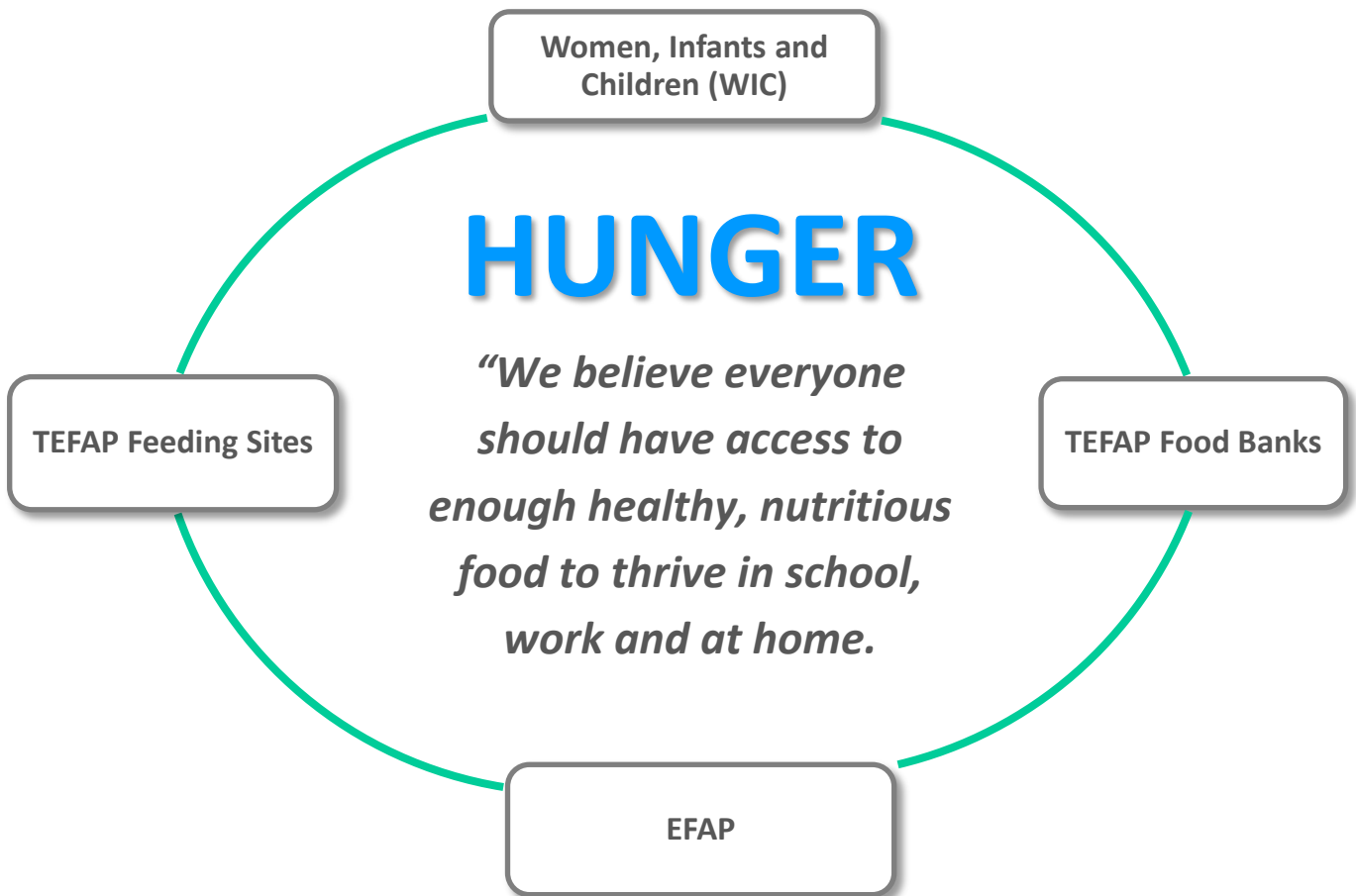
Funding Partners Include: Washington Department of Health, US Department of Health and Human Services

MONARCH CHILDREN’S JUSTICE & ADVOCACY CENTER

Funding Partners Include: Department of Health and Human Services, United Way of Thurston County, Nisqually Tribe, Department of Commerce (Office of Crime Victims Advocacy), National Children’s Alliance, Private donations, Providence St. Peters, Thurston County Prosecutors Office, Zonta of Olympia, Chehalis Tribe, Office of Crime Victims

Client Demographics	# Clients
Male	366
Female	1,688
Age 0-6	311
Age 7-12	540
Age 13-18	440
Age 19+	768
Sexually Abused	1554
Physically Abused	80
Neglect	5

Crime Victim Center – Served 1,265 Clients



Nutritious - Healthy - Thrive - Grow
TEFAP Food Banks (The Emergency Food Assistance Program)
The need for food assistance is steadily increasing. Monthly we serve over 24,000 individuals in Lewis, Mason, Thurston and Kitsap counties at <u>TEFAP Food Banks</u> .
TEFAP Feeding Site (The Emergency Food Assistance Program)
More and more people are seeking food banks and other resources in order to survive, and Community Action Council is here to help. <u>TEFAP Feeding Sites</u> served more than 283,000 meals to hungry individuals and families.
Women, Infants and Children (WIC)
Kids need healthy food to fuel their bodies and brains! Our <u>WIC program</u> distributed over \$1,446,840.00 to households with young children in Thurston and Mason Counties. This has enabled them to stock healthy and nutritious food options in their kitchens.
Emergency Food Assistance Program (EFAP)
Through our Emergency Food Assistance Program over 13,266 people received 1,591,212 pounds of food at our Mason County Food Banks.

TEFAP FOOD BANKS (ANNUAL DATA)

Category	Lewis	Mason	Thurston	Kitsap	Total
Households	15,640	9,001	37,729	54,439	116,809
Individuals	43,890	23,941	93,171	127,276	288,278
Value	\$109,301.80	\$104,186.90	\$389,516.45	\$269,579.33	\$872,584.48
Pounds	160,019	151,675	557,738	396,340	1,265,772

Funding Partners Include: Department of Health and Human Services, General Administration

TEFAP FEEDING SITES (ANNUAL DATA)

Category	Lewis	Mason	Thurston	Kitsap	Total
Meals	15,307	0	174,184	94,026	283,517
Individuals	972	0	4,227	5,011	10,210
Value	\$5,351.00	0	\$61,132.00	\$103,259.00	\$169,742.00
Pounds	8,869	0	93,562	150,437	252,868

Funding Partners Include: Department of Health and Human Services, General Administration

EFAP

Unduplicated Clients	13,266
Unduplicated Households	4,514
Duplicated Clients	101,654
Duplicated Households	34,777
Pounds Distributed	1,591,212

Funding Partners Include: Department of Commerce

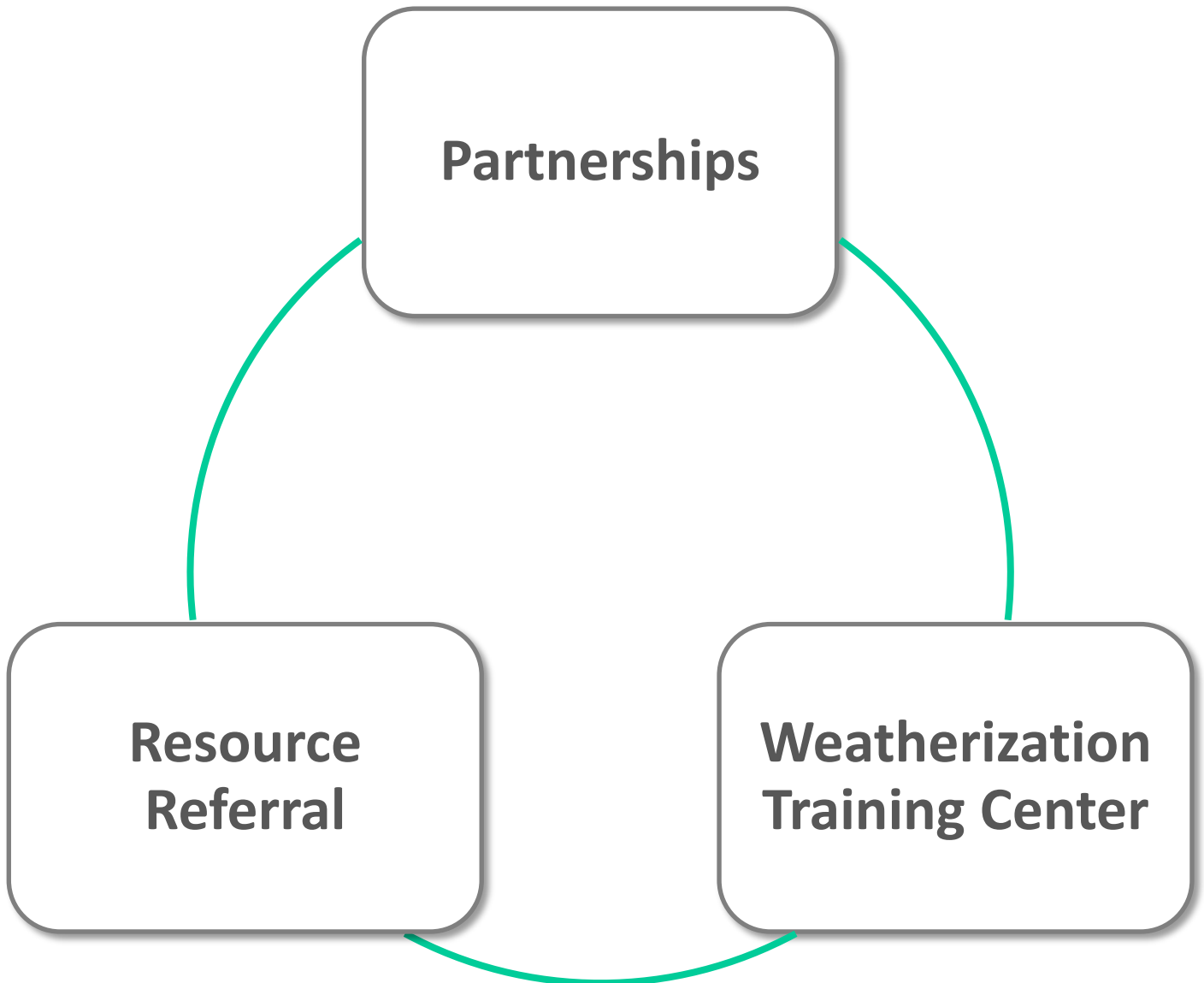
WOMEN, INFANTS & CHILDREN

Vouchers Distributed (Approximate Value)	
Thurston County	\$739,740.00
Mason County	\$707,100.00
Total	\$1,446,840.00

Funding Partners Include: Washington State Department of Health, Department of Health and Human Services

COMMUNITY ENGAGEMENT

“We believe in actively working with our community to provide resource referrals, training opportunities and partnerships.”



Coordination - Collaboration - Training - Resources

Resource Referrals

Over 29,000 people received appropriate resource referral to Community Action Council services as well as other service providers in the community.

Partnerships

We actively partner with 70 public and private organizations to expand resources and opportunities in order to achieve positive family and community outcomes. Partnerships include nonprofits, faith based organizations, local governments, and private organizations.

Weatherization Training Center

The Weatherization Training Center provides training in lead safe practices, OSHA, thermal imaging and more. The facility allows for video conferencing, making it truly multifunctional to the agency and community as a whole.

Resource Referral

Over **29,196** people received appropriate resource referral to Council services as well as other service providers in the community.

Partnerships

Community Action Council actively partners with both public and private organizations to expand resources and opportunities in order to achieve family and community outcomes. Organizations include nonprofits, faith based organizations, local governments, and private corporations.

Total number of partnerships – 70

Weatherization Training Center

Other Community Action Agency Staff	3
State Staff	1
Private Contractors	0
State Video Conference/Meetings	0

(Training includes lead safe practices, OSHA, thermal imaging and more)